

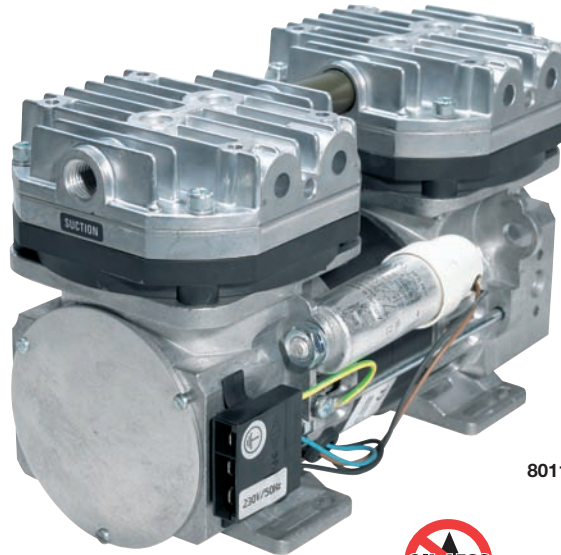
DIAPHRAGM



Diaphragm Pumps

MODELS

8011V
8011ZVP
8011ZVR



8011



PRODUCT FEATURES

- Oil-less
- Maintenance free
- Aluminium seawater resistant
- Silent (50 – 54 dBA)
- Low vibrations
- High performance

TYPICAL APPLICATIONS

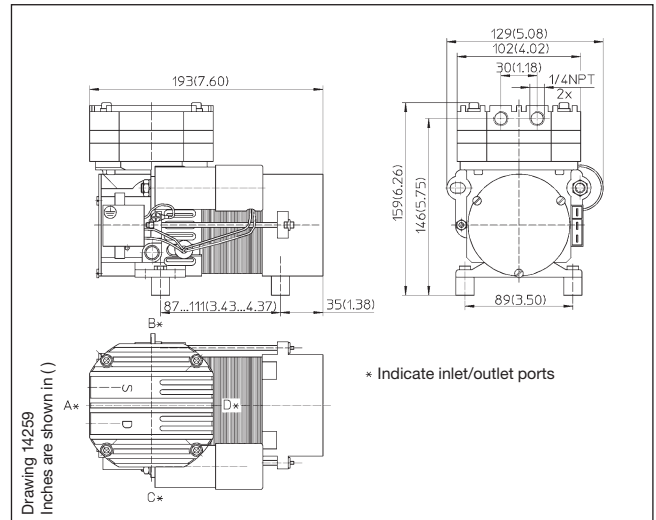
- Autoclaves
- Analysers
- Vacuum ovens
- Rotation Evaporator
- Degassing
- Aspirators



THOMAS
A Gardner Denver Product

Diaphragm Pump 8011V AC

Flow	40,8 l/min
Max. vacuum	95%



Pneumatic Data

Description	8011V-35 AEE	8011V-35 AEE
Part number	115 V/60 Hz 230 V/50 Hz	80110122 80110119
Max. flow	40,8 l/min	34,0 l/min
Max. vacuum	95 %	95 %
Max. continuous vacuum	95 %	95 %
Max. restart vacuum	Ambient pressure	Ambient pressure

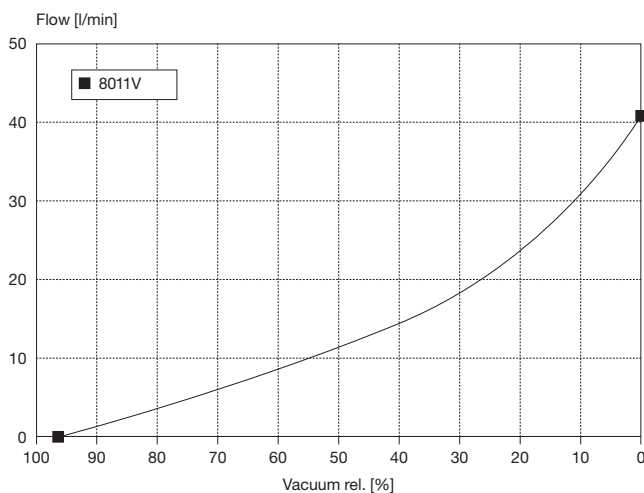
Electrical Data

Motor type	Capacitor	Capacitor
Nominal voltage	115 V/60 Hz	230 V/50 Hz
Nominal speed	1600 rpm	1500 rpm
Current consumption	1 A	0,4 to 0,5 A
Starting current	2,3 A	1,0 to 1,15 A
Power consumption	115 W	85 to 115 W
Protection class	IP00	IP00
Motor insulation class	F	F
Thermal switch	140 °C	140 °C

General Data

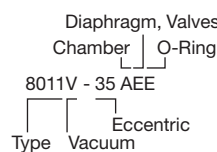
Ambient temperature	15 to 40 °C	15 to 40 °C
Media temperature	15 to 40 °C	15 to 40 °C
Weight	3,5 kg	3,5 kg
Port direction	BC	BC

Flow Curves



Choice of materials	Standard	Option
Chamber + Head	Aluminium	Aluminium hard coated Heatable, optional with heating cartridge and controller
Diaphragm	EPDM	-
Valves	EPDM	FKM vapour resistant
O-Ring	EPDM	-

Model key:



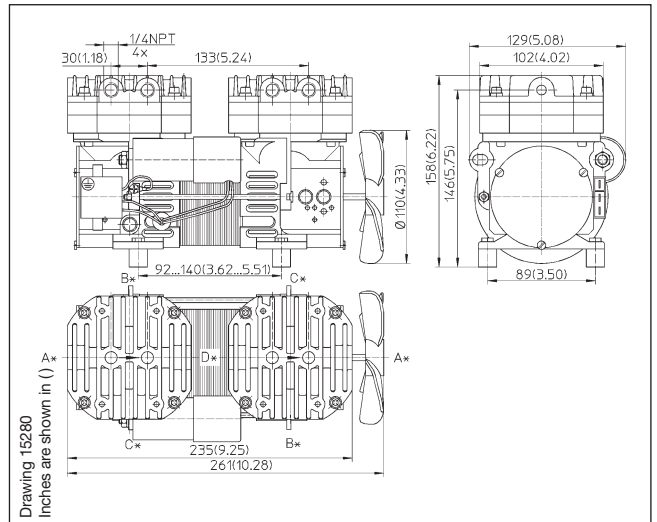
8011... Stock programme

The information presented in this material is based on technical data and test results of nominal units. It is believed to be accurate and reliable and is offered as an aid to help in the selection of Thomas products. It is the responsibility of the user to determine the suitability of the product for the intended use and the user assumes all risk and liability whatsoever in connection therewith. Thomas does not warrant, guarantee or assume any obligation or liability in connection with this information.

THOMAS
A Gardner Denver Product

Diaphragm Pump 8011ZVP AC

Flow	72,0 l/min
Max. vacuum	93%



Pneumatic Data

Description	8011ZVP-35 AEE	8011ZVP-35 AEE
Part number	115 V/60 Hz 230 V/50 Hz	80110121 80110110
Max. flow	72,0 l/min	65,0 l/min
Max. vacuum	93%	93%
Max. continuous vacuum	93%	93%
Max. restart vacuum	Ambient pressure	Ambient pressure

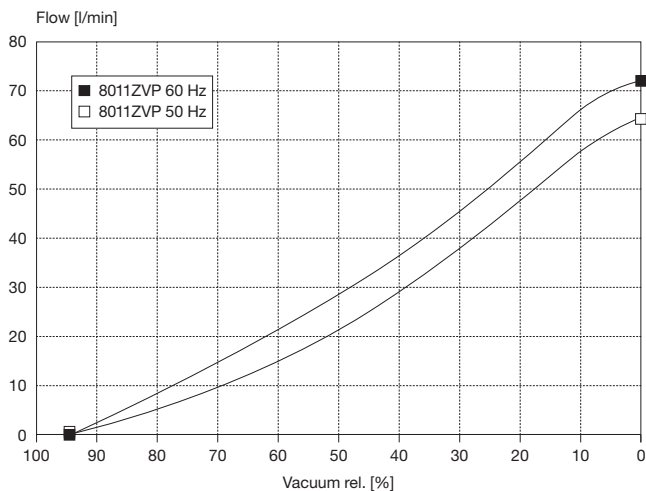
Electrical Data

Motor type	Capacitor	Capacitor
Nominal voltage	115 V/60 Hz	230 V/50 Hz
Nominal speed	1500 rpm	1270 rpm
Current consumption	1,5 A	0,6 A
Starting current	3,3 A	1,4 A
Power consumption	90 W	95 W
Protection class	IP00	IP00
Motor insulation class	F	F
Thermal switch	140 °C	140 °C

General Data

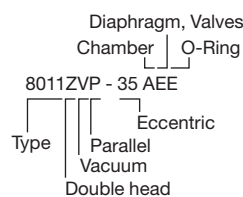
Ambient temperature	15 to 40 °C	15 to 40 °C
Media temperature	15 to 40 °C	15 to 40 °C
Weight	5,0 kg	5,0 kg
Port direction	BC	BC
Configuration	Parallel	Parallel

Flow Curves



Choice of materials	Standard	Option
Chamber + Head	Aluminium	Aluminium hard coated Heatable, optional with heating cartridge and controller
Diaphragm	EPDM	-
Valves	EPDM	FKM vapour resistant
O-Ring	EPDM	-

Model key:



8011... Stock programme

The information presented in this material is based on technical data and test results of nominal units. It is believed to be accurate and reliable and is offered as an aid to help in the selection of Thomas products. It is the responsibility of the user to determine the suitability of the product for the intended use and the user assumes all risk and liability whatsoever in connection therewith. Thomas does not warrant, guarantee or assume any obligation or liability in connection with this information.



Printed in Germany.
Art.-Nr.: 17000139 11/2010
ClimatePartner 
printed climate-neutrally

Gardner Denver Thomas GmbH
Benzstraße 28 · Gewerbegebiet Nord · D-82178 Puchheim
Phone: +49 89 80900-0 · Fax: +49 89 808368
e-Mail: thomas.de@gardnerdenver.com · <http://www.gd-thomas.com>